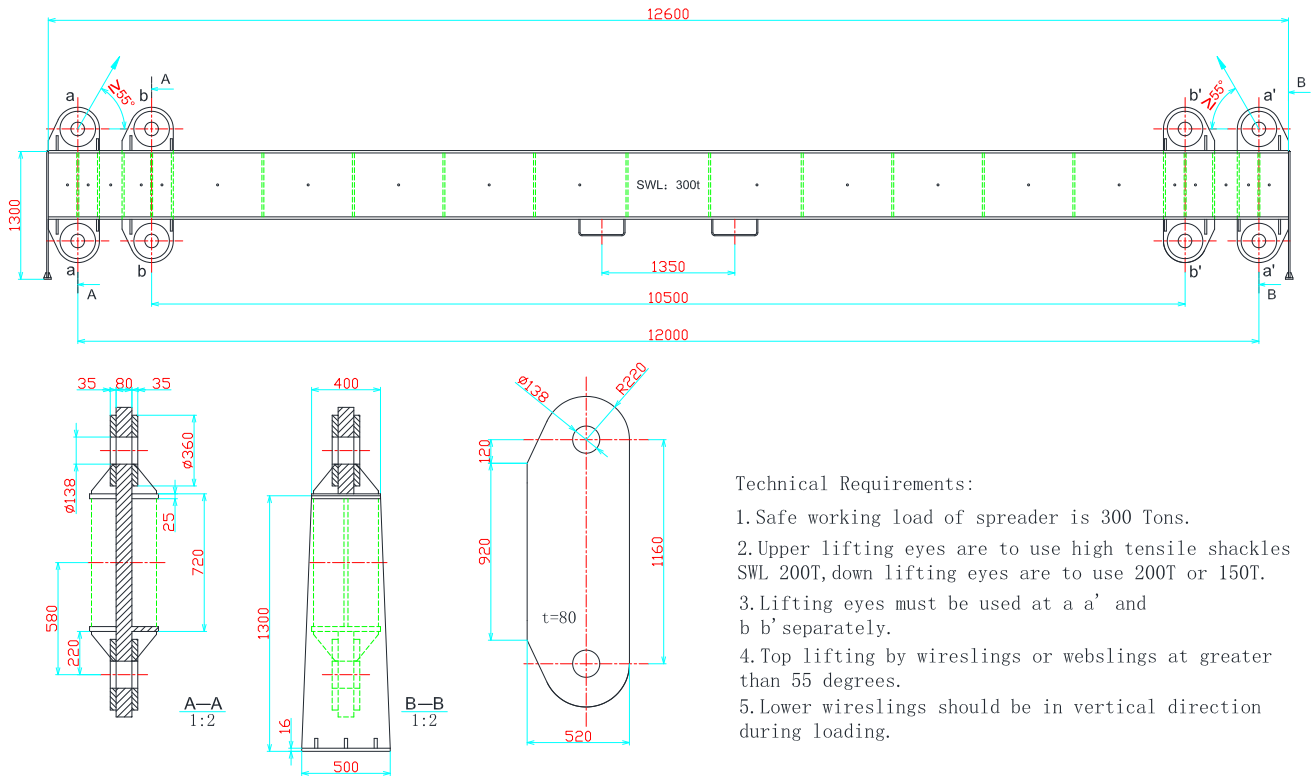


01-A 直型上下结构吊梁



Technical Requirements:

- 1.Safe working load of spreader is 300 Tons.
- 2.Upper lifting eyes are to use high tensile shackles SWL 200T,down lifting eyes are to use 200T or 150T.
- 3.Lifting eyes must be used at a' and b b' separately.
- 4.Top lifting by wireslings or webslings at greater than 55 degrees.
- 5.Lower wireslings should be in vertical direction during loading.

基本参数:

安全载荷: SWL300T-12M

图号: PSR-04-05-00

自重: 6900KG

数量: 2 PC

服务项目: 张家港吊装门机, 两根横梁抬吊

钢丝绳圆索: SWL185T-12M

出厂编号: PSLBV2020910/11

BV证书编号: 13721CHN20

