

Fixed Container Fittings

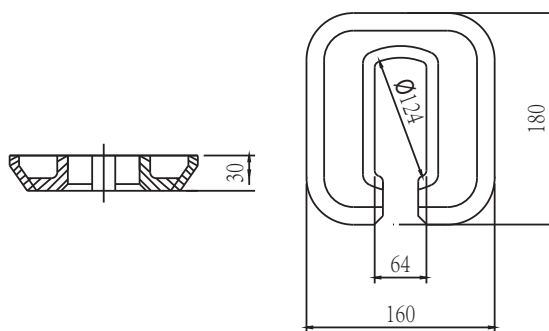
Single Semi-Raised Deck Socket

Weight:4.0 Kg

Breaking Load:420KN

Material:Shipbuilding Steel

Finish:Primer Paint



DF-5

Single Semi-Raised Deck Socket

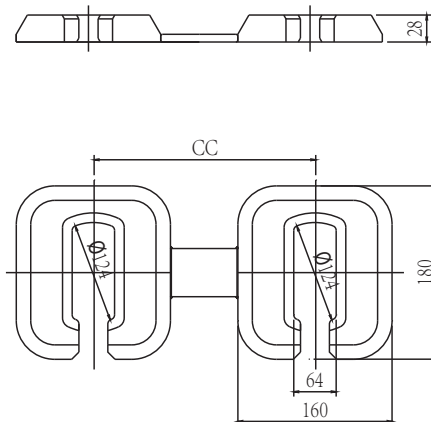
Weight:DF-6(10)Cc=203mm•8.6Kg

DF-6(20)Cc=258mm•9.6Kg

Breaking Load:420KN

Material:Shipbuilding Steel

Finish:Primer Paint



DF/2-5